



RT Commander Installation & Updating Software and Algorithms

These instructions are intended to be used by individuals with a basic knowledge of the RT200 system and RT Commander Software. Please consult the RT200 manual as necessary.

Note: You must have Microsoft *ActiveSync* software installed on your PC desktop or laptop before you can connect to your Recon via the USB cable supplied with your Recon. *Active Sync* is supplied on a CDrom that came with your Recon. Refer to Microsoft documentation on the web about using *ActiveSync*. It is recommended to connect as a “Guest Partnership” unless you want your Outlook Contacts, etc to be synchronized to the Recon. You can also download the current version of *ActiveSync* at www.microsoft.com/download.

Summary

New features have been incorporated into RT Commander (RTC), the software for the RT200 system. In addition, there are generally new or updated algorithms each season, and new crops have been added. For custom algorithms, there is an option to interpolate between 16point table values, and a 100pt table for greater resolution of rate changes to NDVI values.

Are the updates compatible with my system?

Before doing any updates, you must check the version of the RT200 Interface Module (I/M). To check the version, connect your PDA to the RT200 interface module and activate your RT200 system as you normally would.

Open RT Commander on your Recon and select Task / Show Status

RT200 Status:

HW ver:	B	[or higher]
SW ver:	1.1.5	[or higher]

If your system is not at this version, contact your distributor about upgrading your Interface Module.

What are you installing?

Whether you are re-installing your current version or updating to a new version, **please back up any data files and any custom algorithms first to another computer**. This can be done with *Active Sync* and saving to your PC Desktop or laptop. You can also back up data and custom algorithms with a CF data card and the “cut and paste” method on the Recon.

Some systems will have version 1.2; most will have version 1.3.5. In any case the upgrade process will be the same. The basic look and function of the new version is similar, with differences only where new features have been added.

How do I get the replacement or updated software and files?

While the original revision software is shipped on CD Rom with each system, the latest software and algorithms are generally available online for direct download to a Windows PC at www.ntechindustries.com/software.

Click on the link (e.g. [ver 1.3.5](#)) and save file to your desktop computer. Files are compressed (zipped). You will need to uncompress (extract) it (if your computer doesn't do it automatically) using **WinZip** or **Stuffit Expander** or similar utility (www.winzip.com, www.stuffit.com).

- 1.3.2 Adds 100pt custom table, additional diagnostic functions
- 1.3.3 Adds Corn and Canola algorithms for 2007, fix for GPS simul/rcvr switching.
- 1.3.4 Adds improved file management for jobs, fix for DSD, prevents program crash when using custom tables
- 1.3.5 Adds capabilities for high-resolution RT220 systems users, suppress errors on status bar
- 1.3.6 Adds updates to several crop algorithms and adds algorithms for new regions, and adds sorghum, durum and cotton. Can operate with faster GPS receivers and run at higher rates

Running the Installer from your desktop PC...

The uncompressed file is an executable installer (e.g. **install rtc_v_1_3_5.exe**).

- You must delete the current Algorithms in the PDA. Tap **Start > File Explorer** and look in **My Documents** for *rtc_crop_algorithms*. Tap and hold the stylus on this file until task window opens with **Delete** option. Tap **Delete** to remove the file. Close **File Explorer** when finished.
- Now *connect* your Recon to your PC using the USB Cable supplied with your system and establish a connection via *ActiveSync*.
- On your desktop computer, launch the executable installer program (double-click the .exe file icon), it should install in under a minute. You will also see a message on the PDA asking you to confirm install; click OK. An icon for RTC will be visible in your Recon's Start Menu after the installation is complete and it will be in the Programs folder.
- **Important!** Now perform a backup to non-volatile memory. This will insure that you can easily re-install this software if the PDA battery becomes depleted or requires a hard reboot. Choose
Start > Programs > Backup Now (or on most Recons:
Start > Programs > Sprite Backup > Backup Now)
The Recon screen will show the progress; this may take a few minutes to complete.

Note that you *do not have to re-enter* registration info as long as you simply update. (If you un-install or have had all files erased, you *will* have to re-register. See the RT200 manual for details.

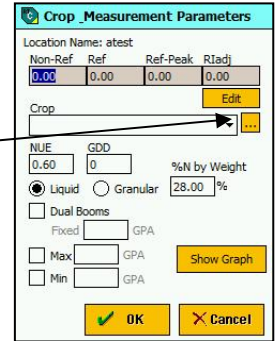
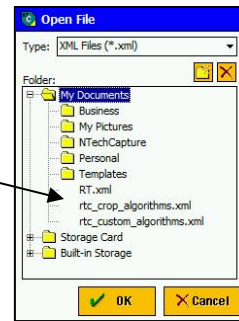
Select an Algorithms File

The first time you launch RT Commander, you will need to let the program know which algorithm file to use. The following is for algorithms which are based on equations built into RT Commander; it does not apply to custom tables you may have created. Launch the RT Commander program and select Task > Show Params...

Beginning with version 1.3.2, you may have more than one collection of algorithms in separate files. RTC ships with the full list of current-version algorithms.

- To use this, click the orange “...” button which opens a File Select... dialog box.
- Navigate to My Documents and select `rtc_crop_algorithms.xml`,* tap OK.
- When returned to Crop_Measurement Parameters screen, tap Cancel and close RT Commander.

**or other algorithm file*



Your installation is now complete!

Important! You should also check www.ntechindustries.com/software for any specific crop algorithm instruction documents and for more important details on how to set up your fields and use the included algorithms for RT Commander and the RT200 system.

These algorithms are developed by the institutions in their names, not NTech Industries, Inc. For details about their operation or implementation, and possible risks associated with using them for your specific application, please contact the institution developers directly. NTech Industries Inc. made every effort to implement and document them accurately for use with GreenSeeker® products, but NTech and its distributors make no guarantees regarding the results you may obtain from the use of these algorithms or our equipment, and will not be liable for any consequential damages incurred by the use of NTech products, including loss or reduction of crop yields or changes in the amounts and expenses or crop fertilizers or other input materials.

Adding or Updating Algorithms

Since the algorithms are installed with the software, *you only need to do this step if you are adding a specific additional algorithm.*

On the web, go to www.ntechindustries.com/software and download the algorithm file to your desktop or laptop PC. Clicking on the link allows you to save the linked file to your computer. Files on the web are compressed (zipped). You will need to uncompress (extract) it (if your computer doesn't do it automatically) using **WinZip** or **Stuffit Expander** or similar utility (www.winzip.com, www.stuffit.com). Select a location that will be easy for you to locate, such as your desktop. (It is not necessary to open the .xml algorithm files; just copy them to the Recon.)

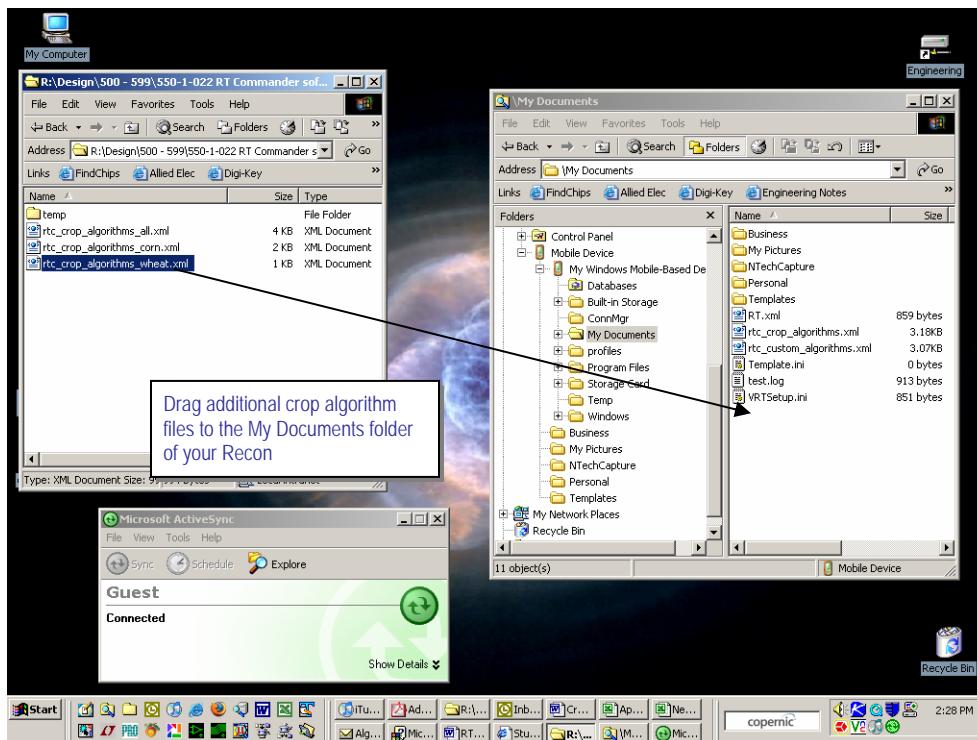
If you wish to update or replace the algorithms list, sync your Recon to your PC using *ActiveSync*. Your Recon now appears like an external drive.

Copy the algorithm file to the My Documents folder* on your Recon

* Mobile Device/My Windows Mobile-based Device/My Documents/

by dragging as indicated below or via “cut and paste.” If it's the same name, it will replace the existing file. If you are adding a different algorithm set, you can add it here as well; you can have as many as you want as long as each has a different file name. All algorithm files must have the .xml extension.

Reminder: Back up any custom algorithm tables before replacing or updating. Custom tables created with RTC v1.2 will need to be re-entered in RTC v1.3.x.



These algorithms are developed by the institutions in their names, not NTech Industries, Inc.. For details about their operation or implementation, and possible risks associated with using them for your specific application, please contact the institution developers directly. NTech Industries Inc. made every effort to implement and document them accurately for use with GreenSeeker® products, but NTech and its distributors make no guarantees regarding the results you may obtain from the use of these algorithms or our equipment, and will not be liable for any consequential damages incurred by the use of NTech products, including loss or reduction of crop yields or changes in the amounts and expenses or crop fertilizers or other input materials.