

Valve Cartridge with Data Logging option

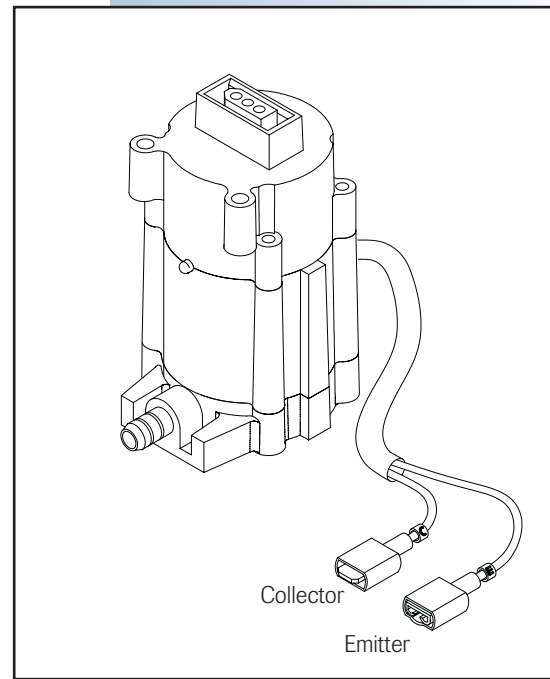
Description

The Model 902 Data Logging Valve Cartridge (VC01-DL) is a hi-speed encapsulated solenoid valve for water-based fluids, with a maximum flow rate of 0.4 GPM.

The cartridge consists of a ¼" hose barb brass inlet, a spray nozzle, a nozzle cap, an LED indicator, a 3-pin electrical connector, and two captive screws. In addition, an 8-in. cable extends from the housing to provide a signal for remote indication or logging of valve closures.

Connecting to the DL Cable

The DataLogging output is optically-isolated; the collector and emitter of the output transistor is brought out, so it can be connected for active-high or active-low output. It can drive logic inputs for 5V, 12V or 24V data loggers or PLCs. It can source or sink loads up to 10mA, allowing it to drive low-current remote devices such as indicators or counters.



Applications

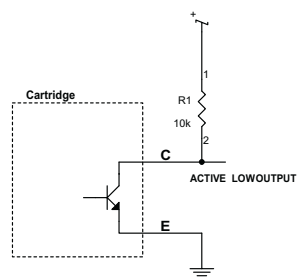
- ◆ Spraying with Simultaneous Data Logging
- ◆ Plant Counting & Mapping
- ◆ Flow/Volume Tracking
- ◆ Remote Actuation Indicator

Electrical

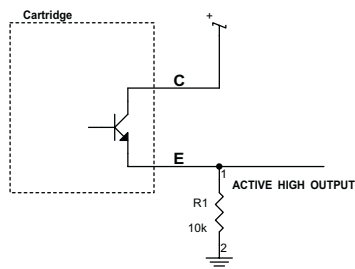
Current	80 mA
Sink or Source current in DL output	12 mA max

Mechanical

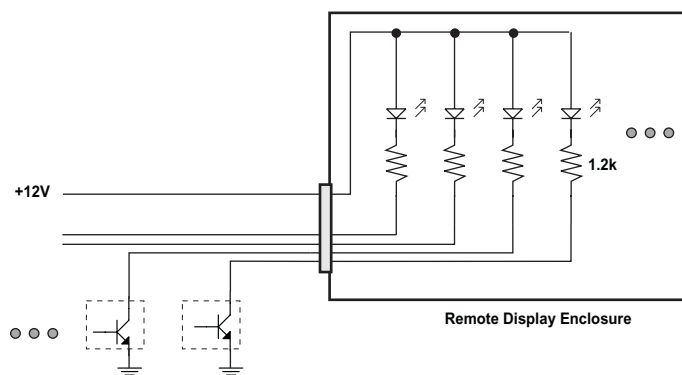
Dimensions	2" x 2.25" x 4.5" (51 x 57 x 114mm)
Weight	6.5 oz (186 g)
Flow Rate	0.4 GPM (Liquids only*)
	Std. Nozzle 6502 (0.2 GPM)



Note: Pull-up resistor may not be needed on some data loggers.



Typical External Connection to PLC or Data Logger



Each cartridge DL output is wired to sink current for an LED indicator.

Ordering Guide

Valve Cartridge w/ Data Logging output	900-1-004
--	-----------

Compatible with all WeedSeeker Sensors

*The valve can handle most water-soluble chemicals. The use of wet-able powder or other materials will cause the solenoid to fail, and void the warranty of the valve cartridge.